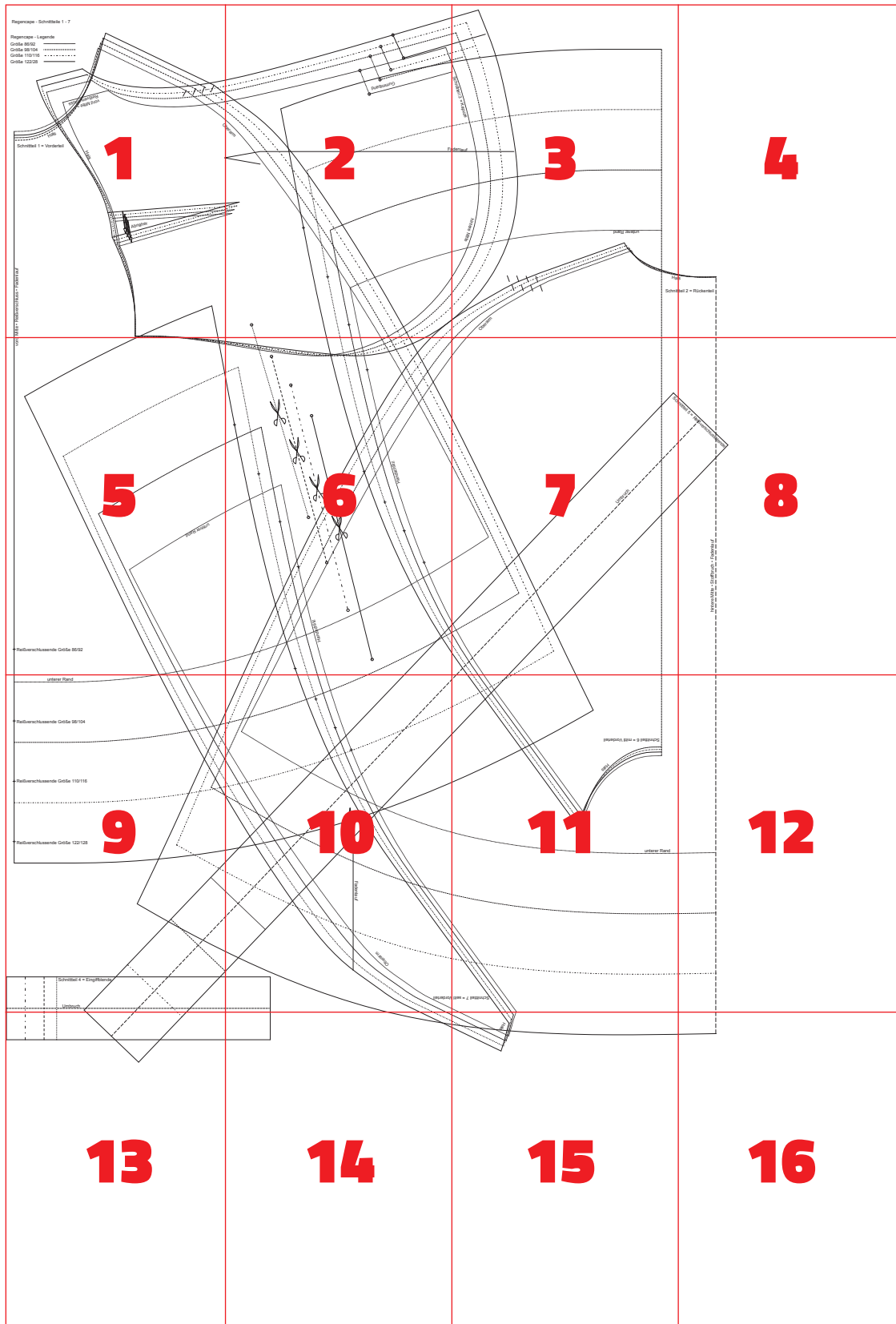


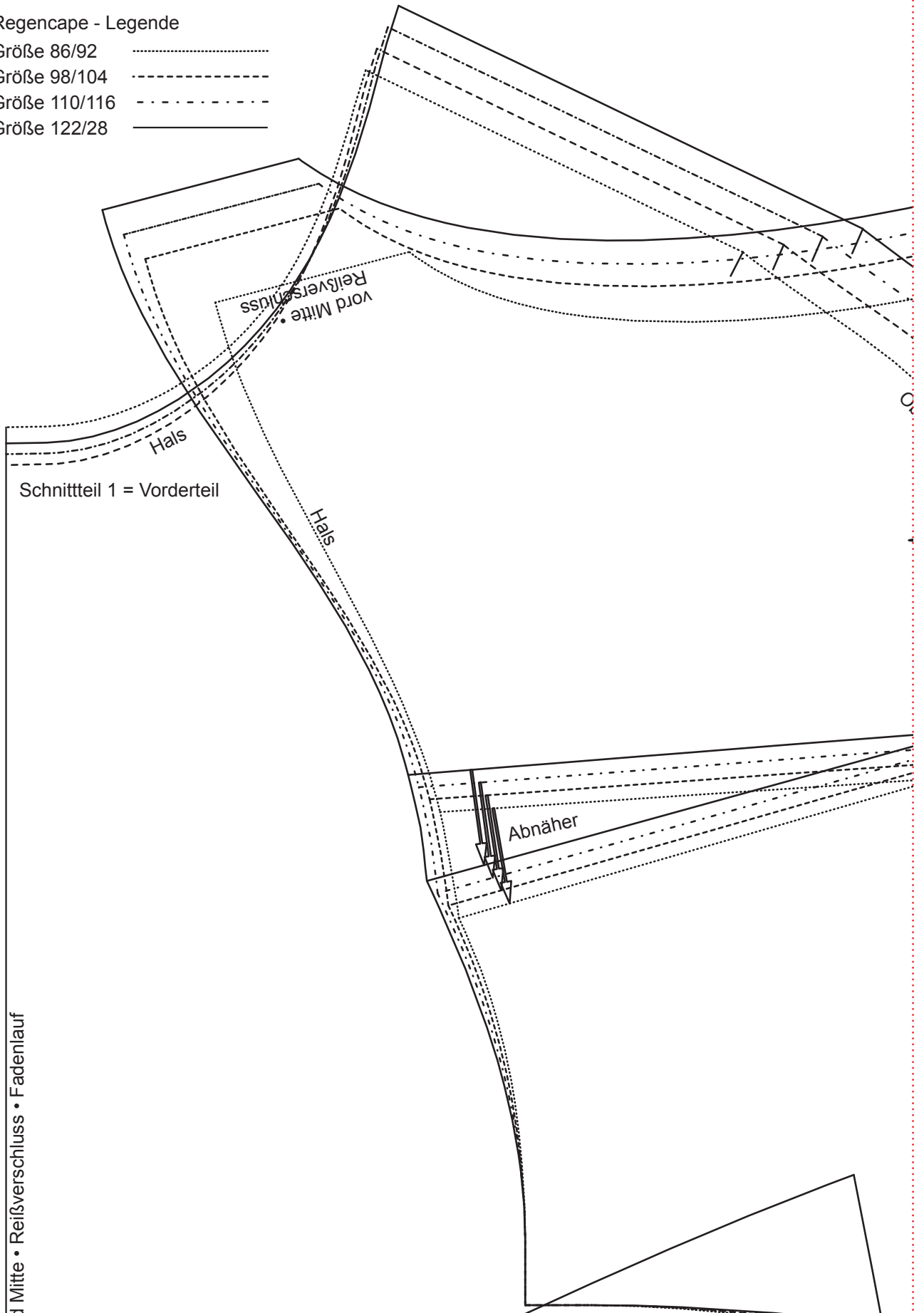
Zusammensetzen der Teile



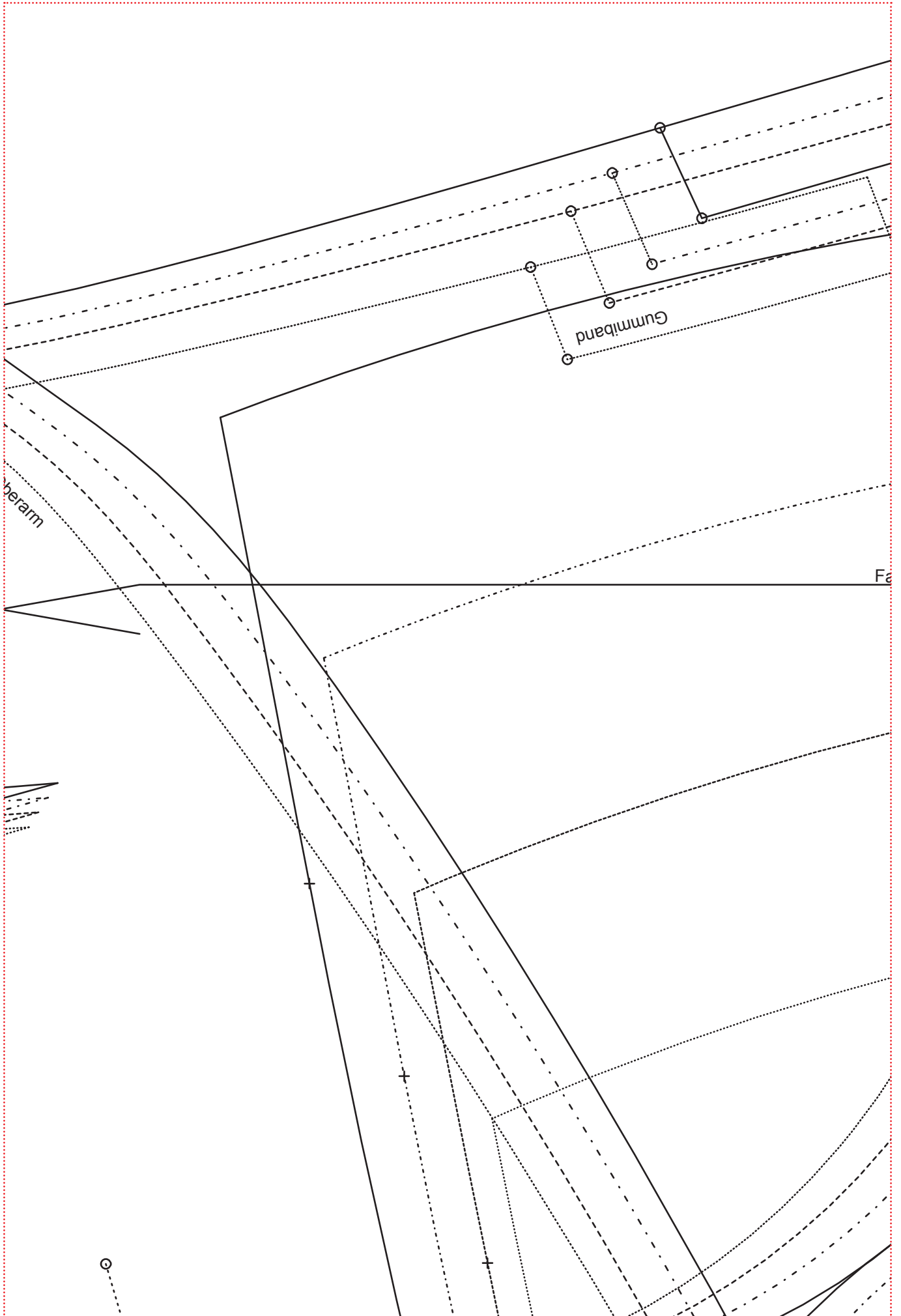
Regencape - Schnittteile 1 - 7

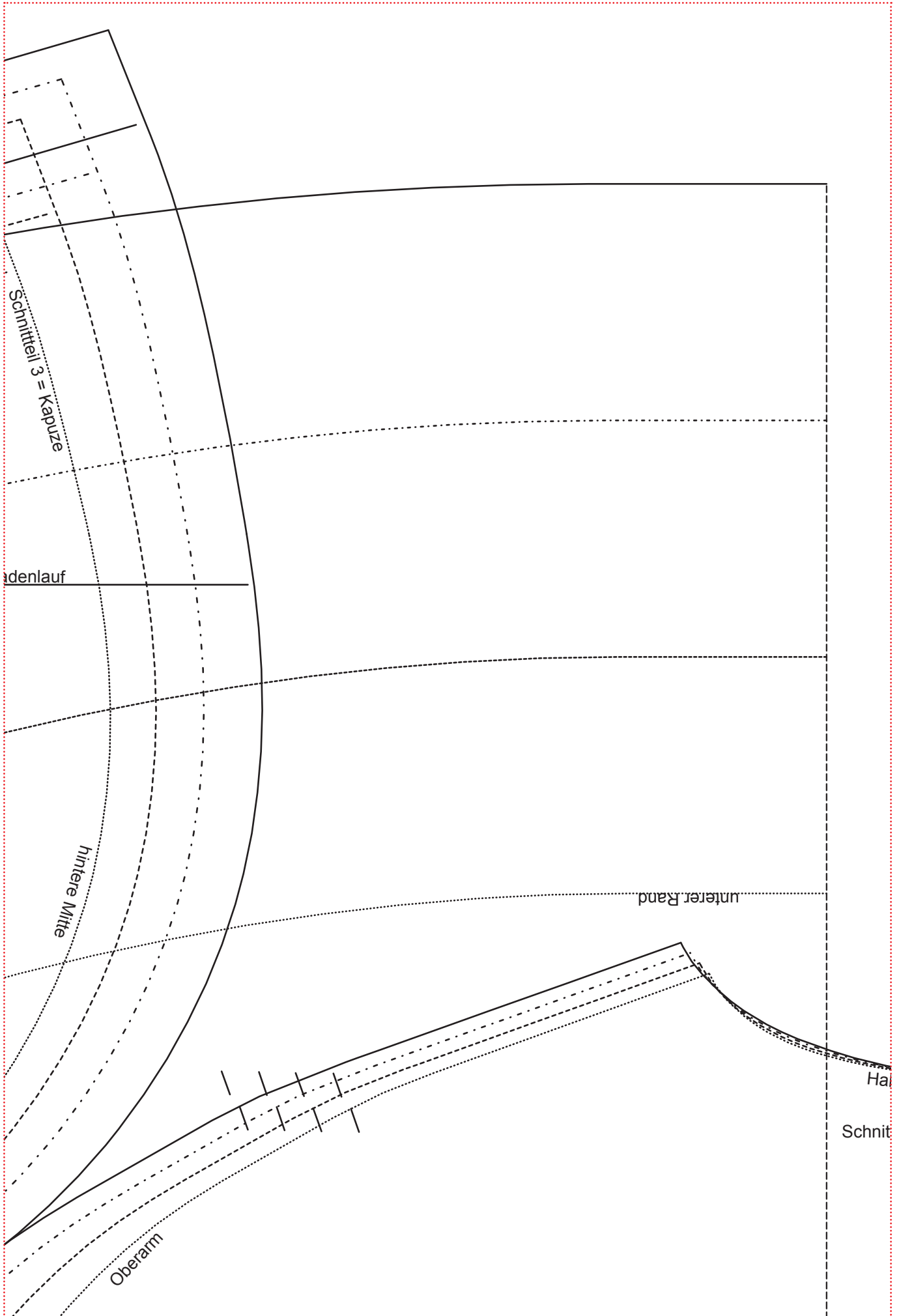
Regencape - Legende

- Größe 86/92 (dotted line)
- Größe 98/104 - - - - - (dashed line)
- Größe 110/116 - · - · - · (dash-dot line)
- Größe 122/28 ——— (solid line)



vord. Mitte • Reißverschluss • Fadenlauf

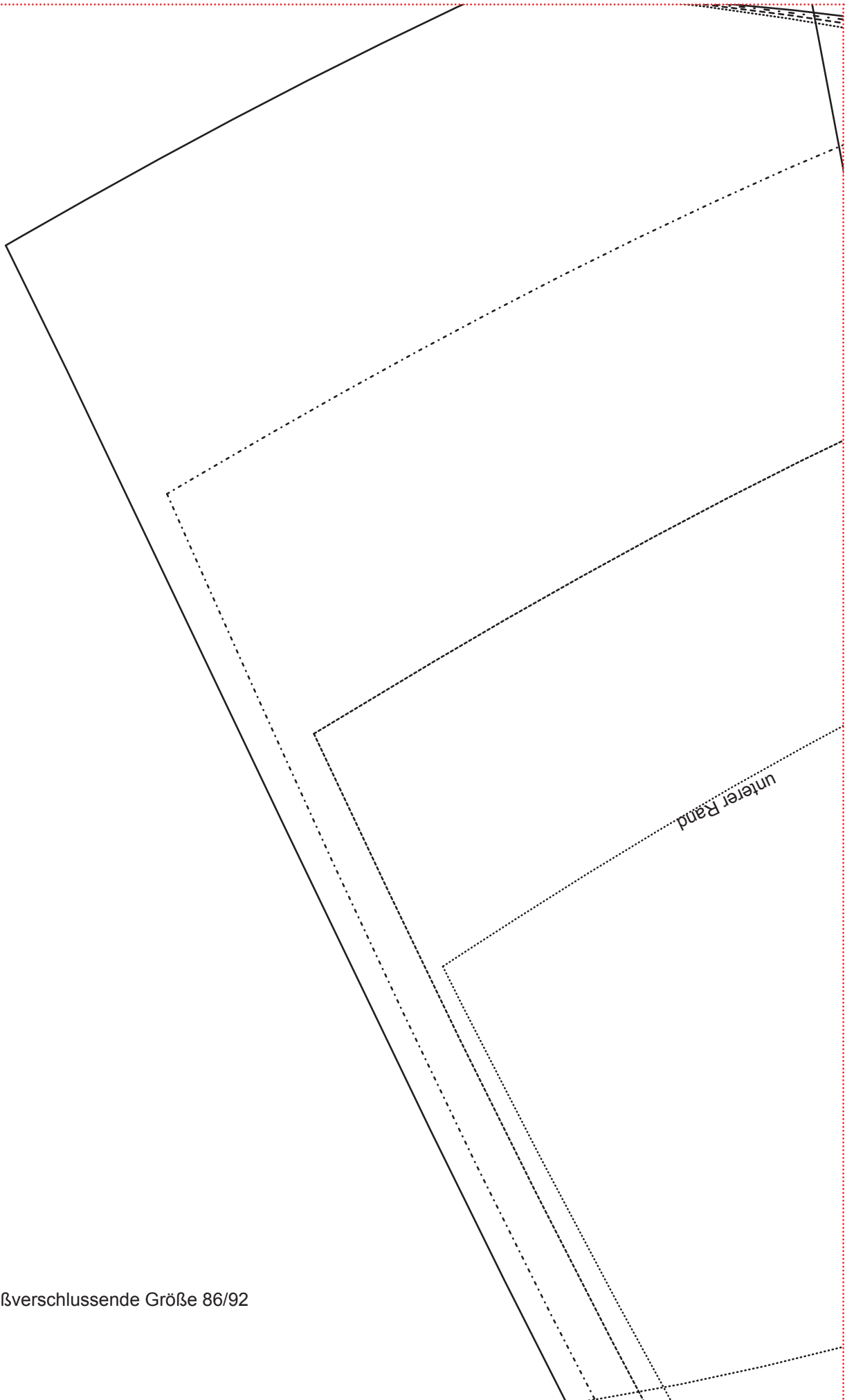






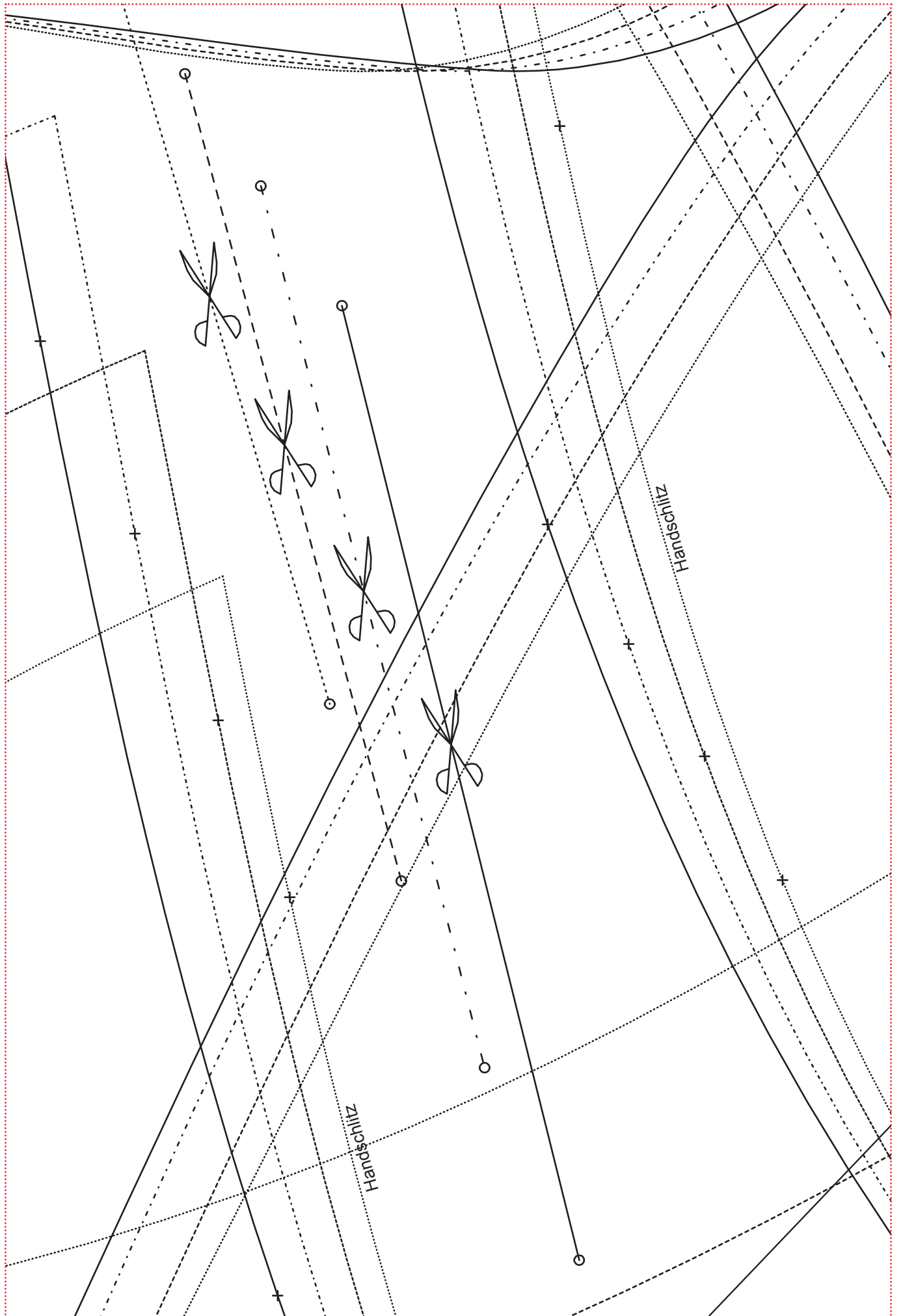
s
tteil 2 = Rückenteil

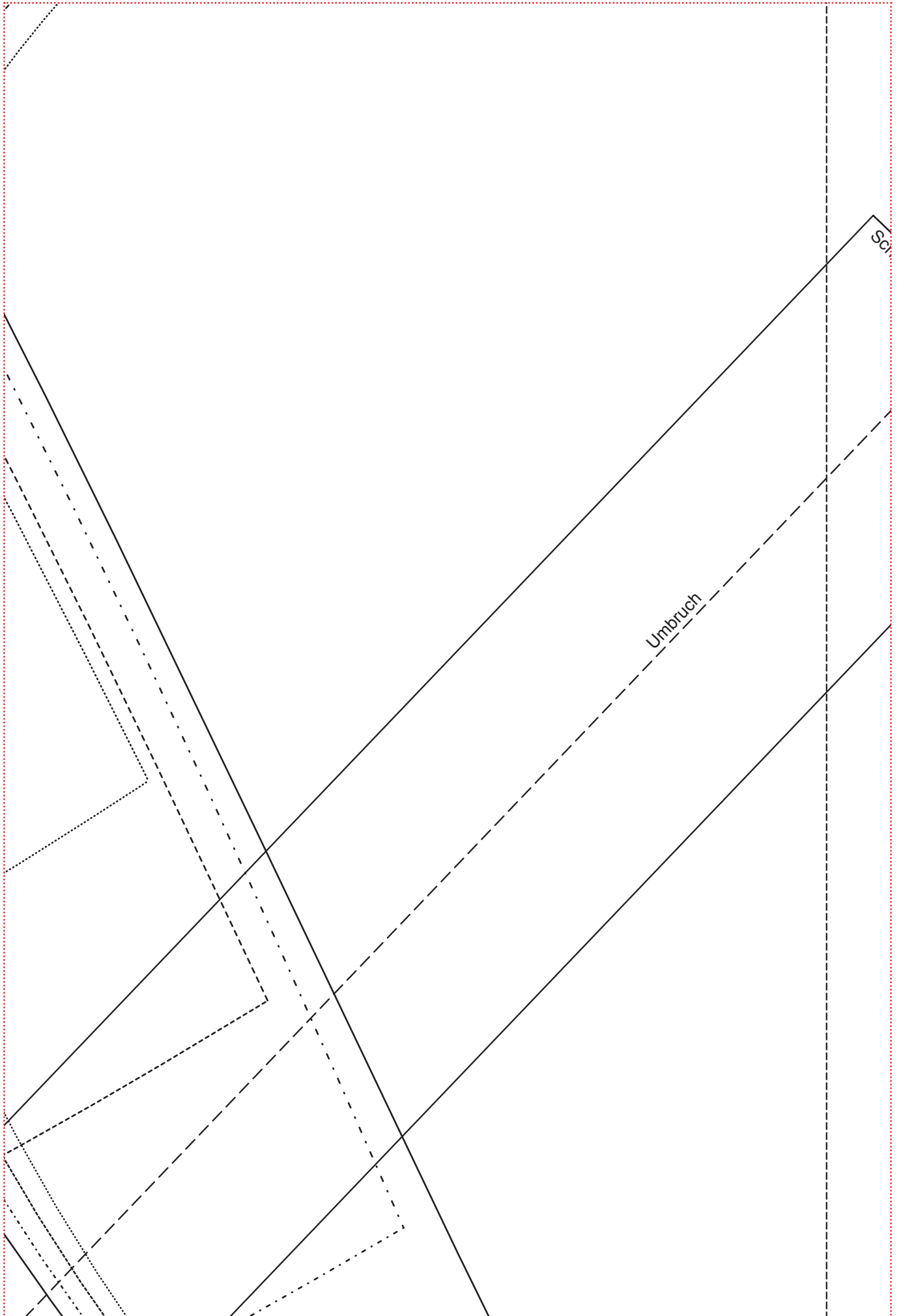
vord

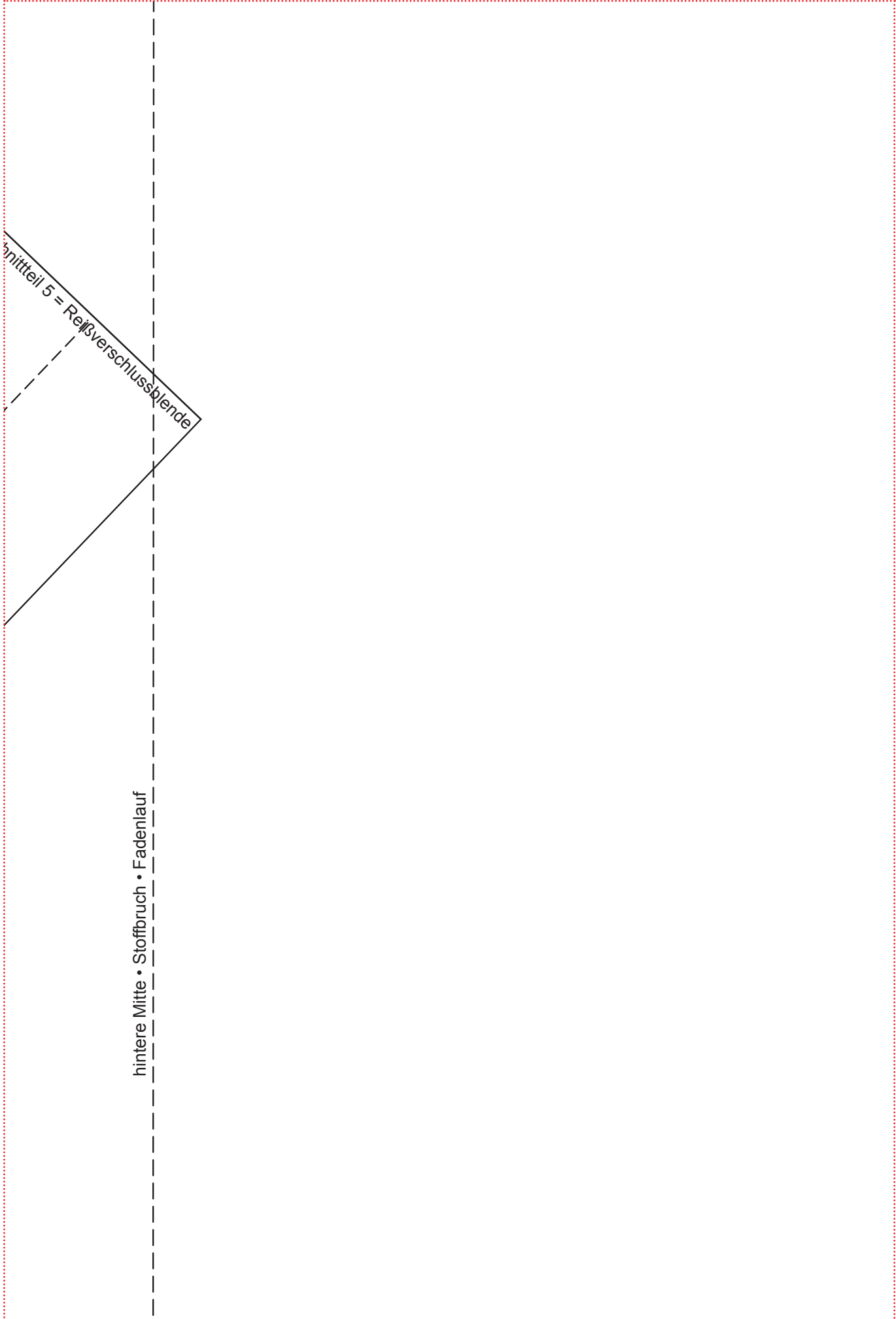


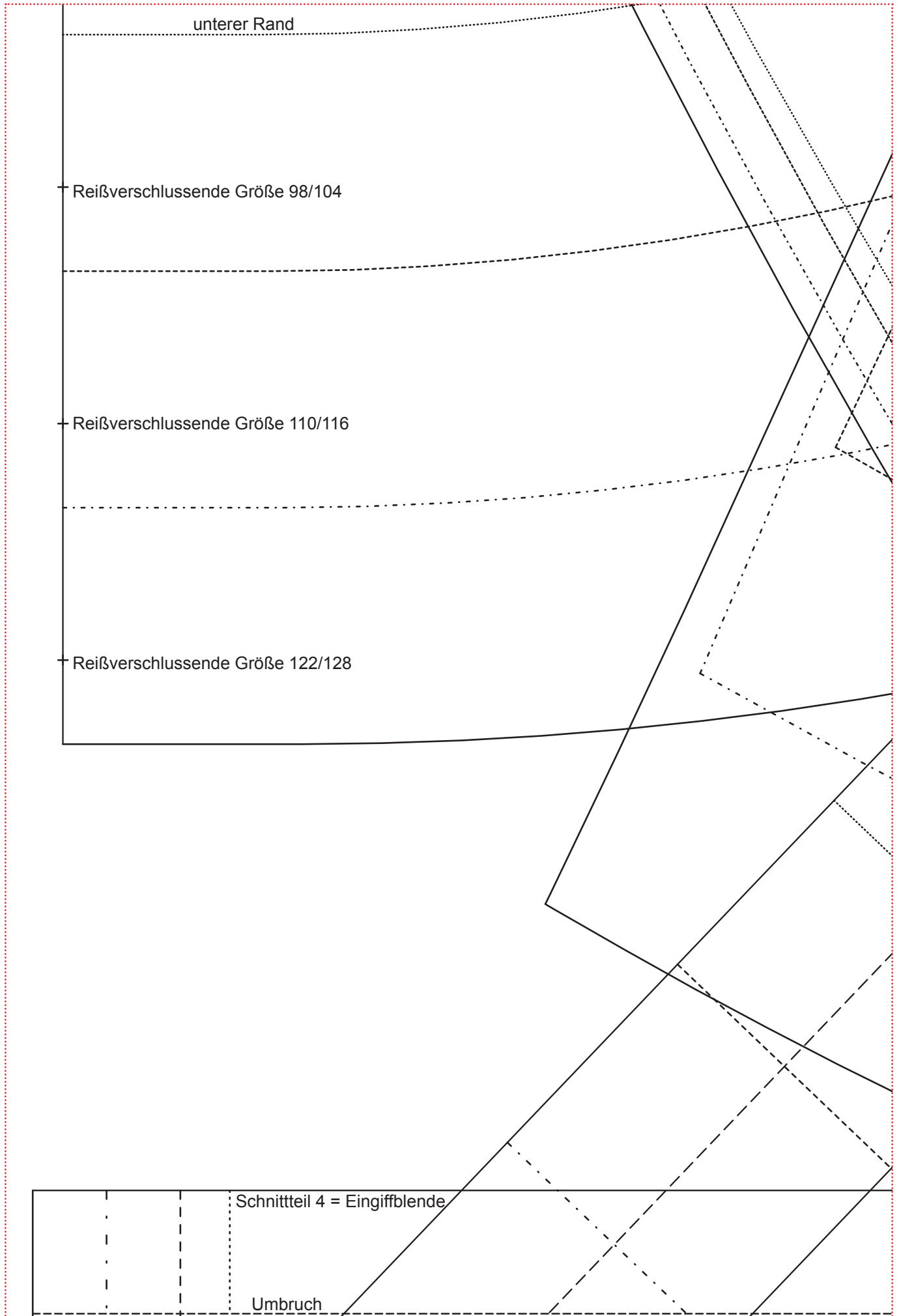
Reißverschlussende Größe 86/92

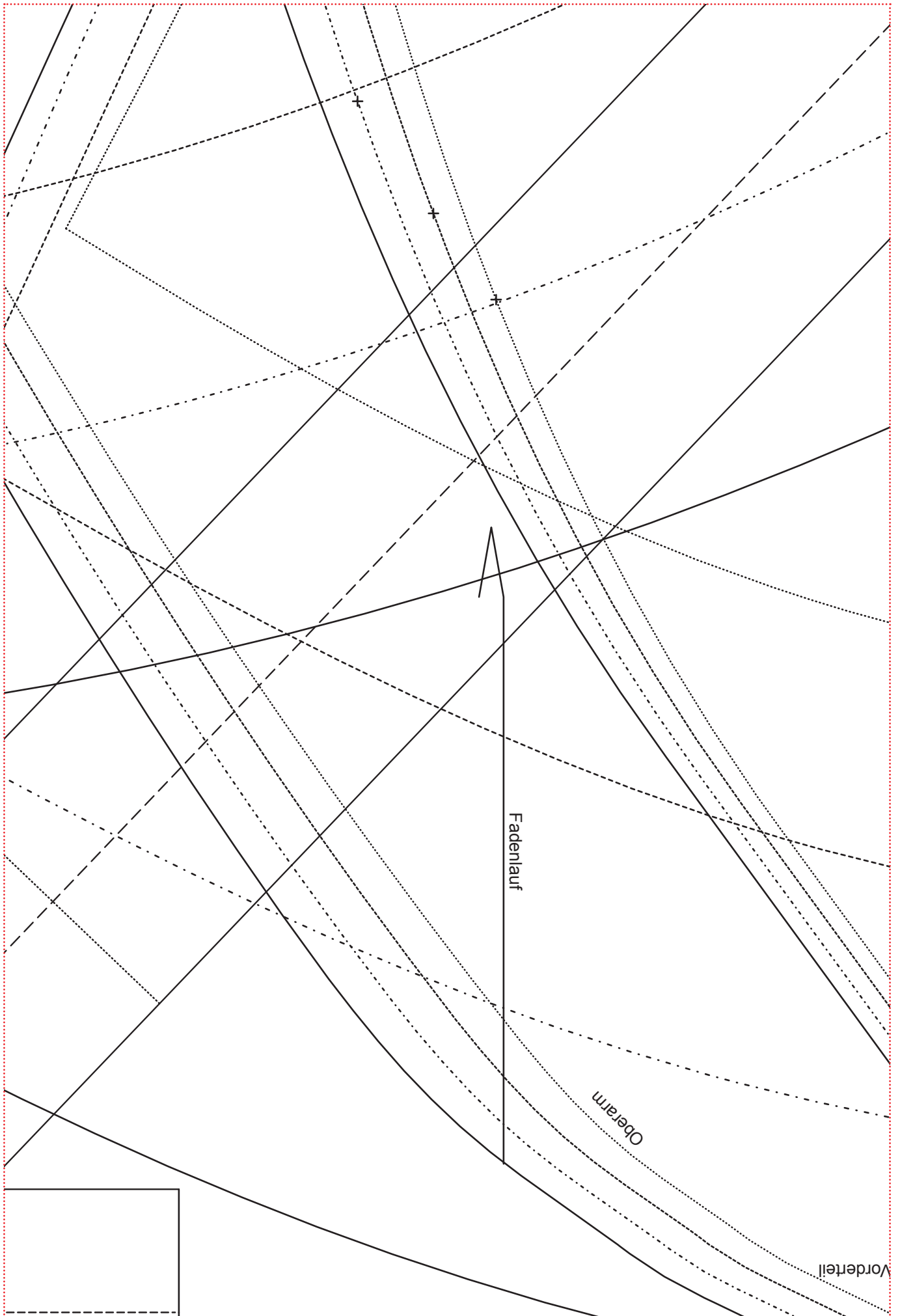
unterer Rand

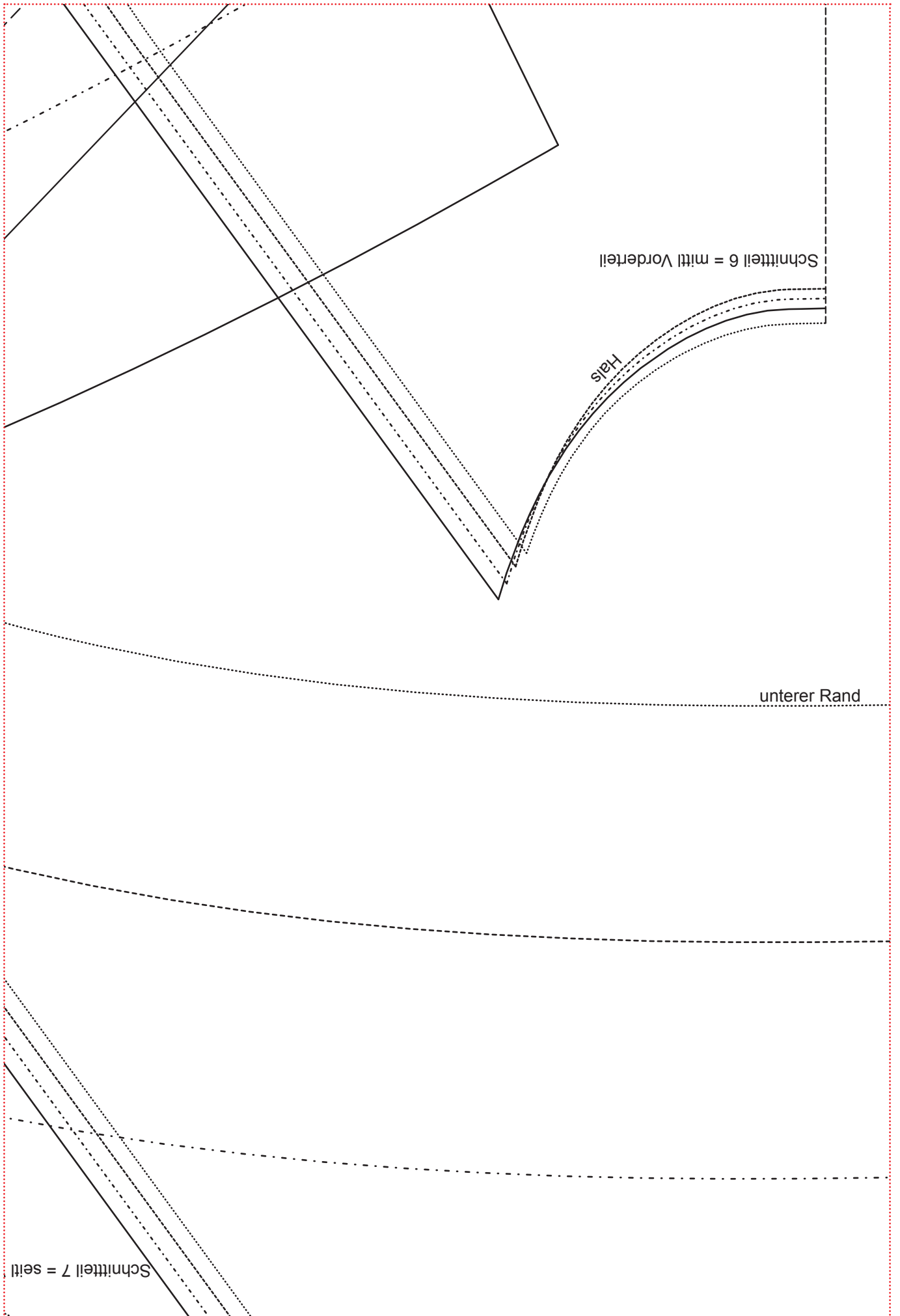




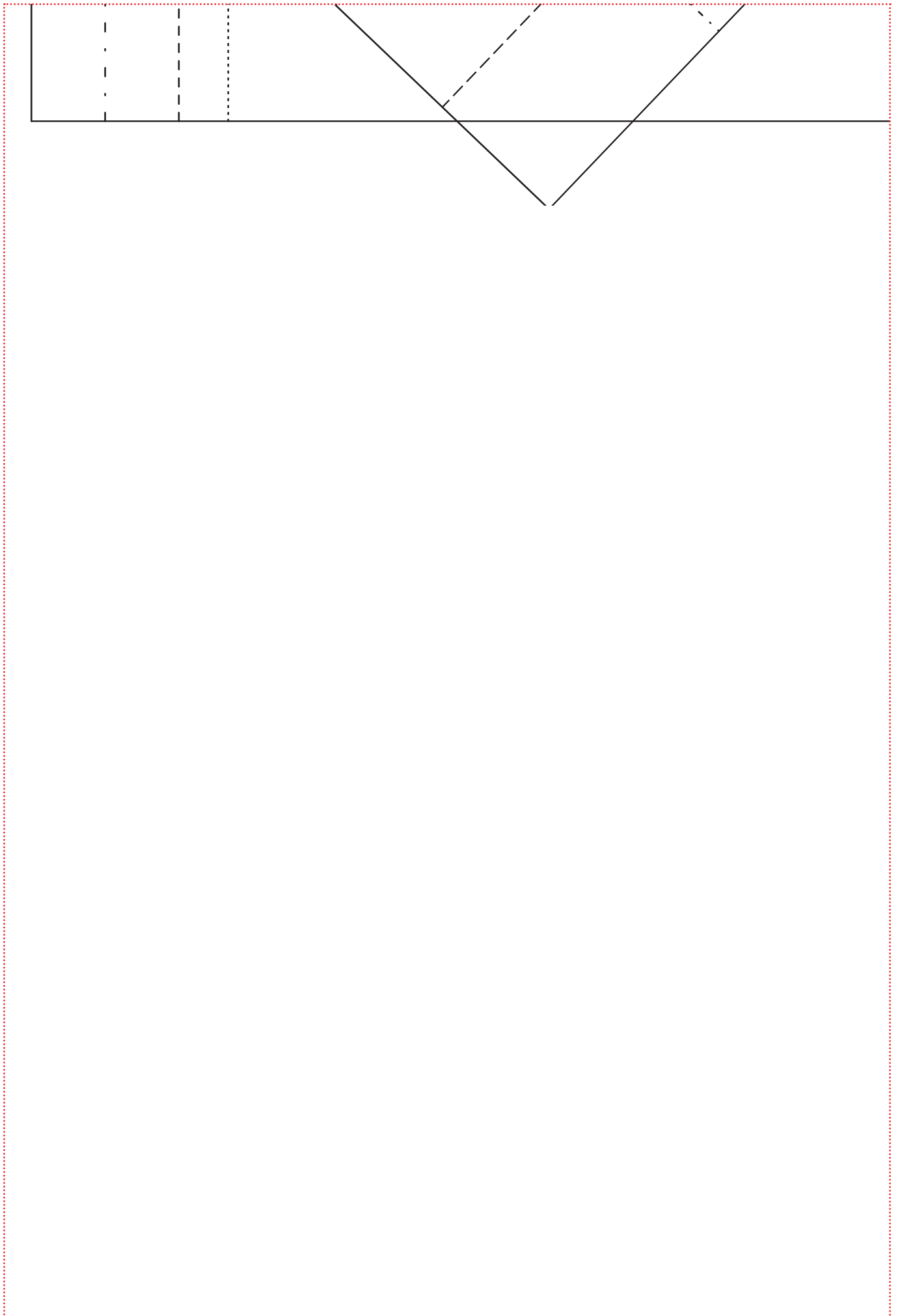


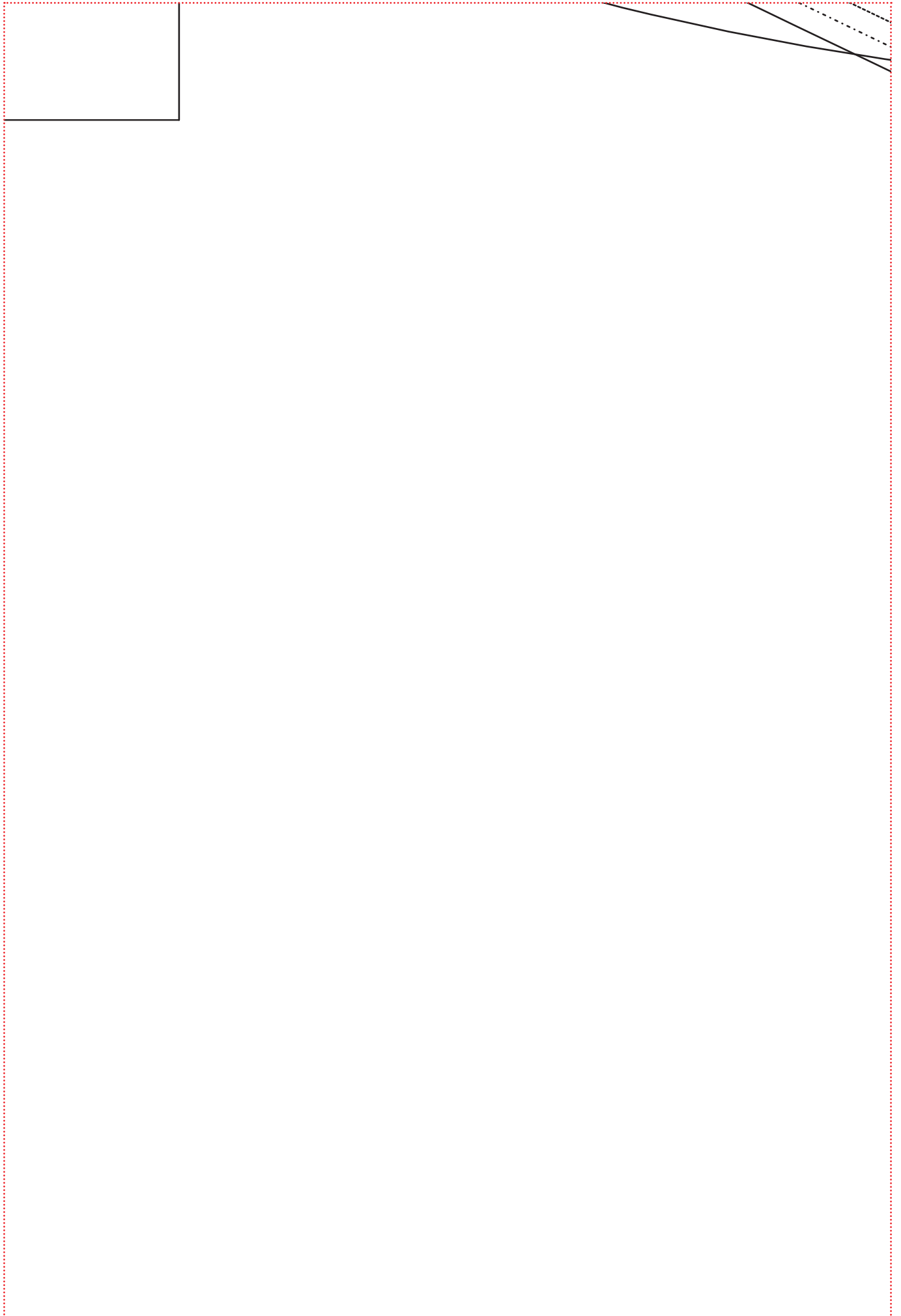


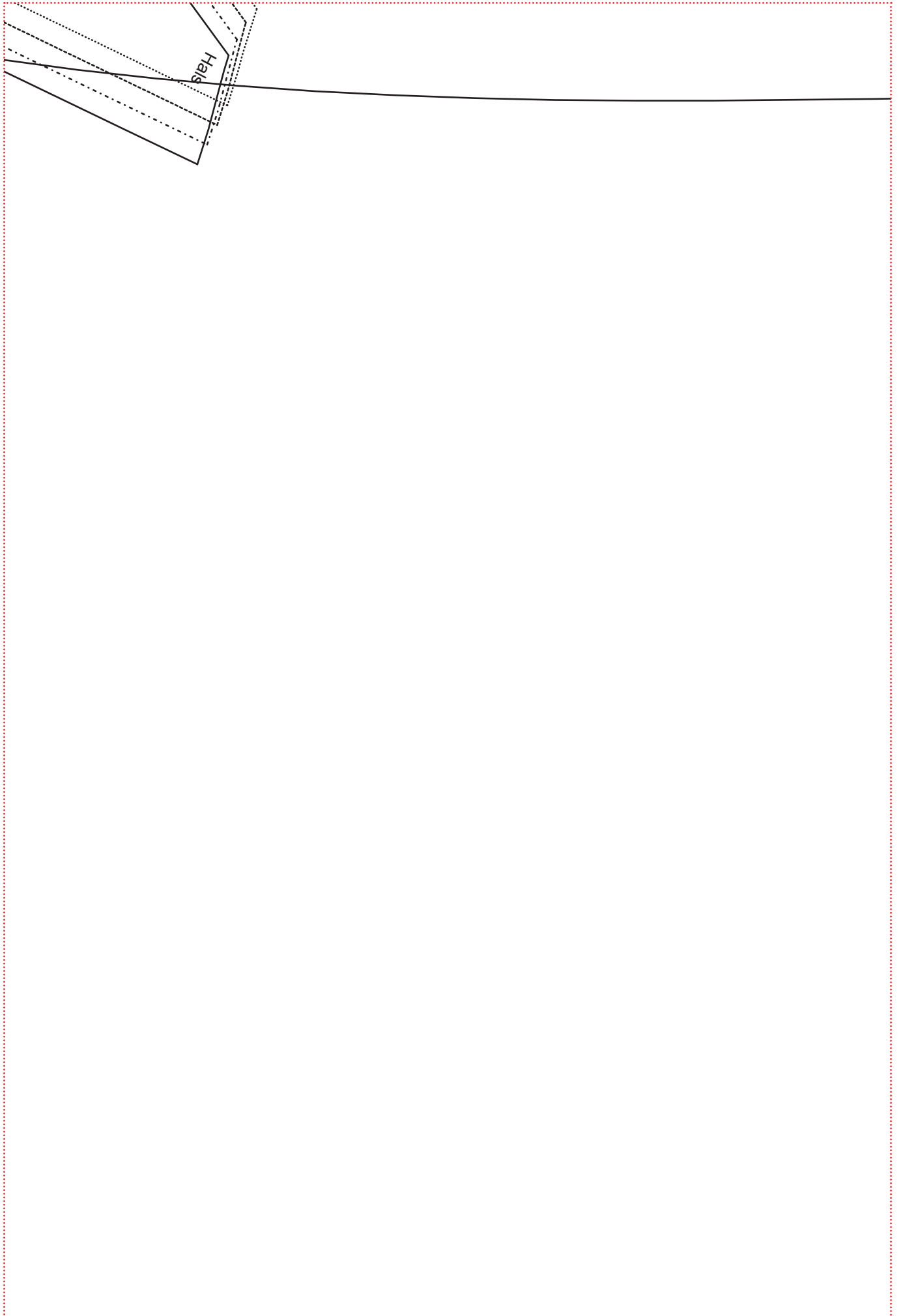


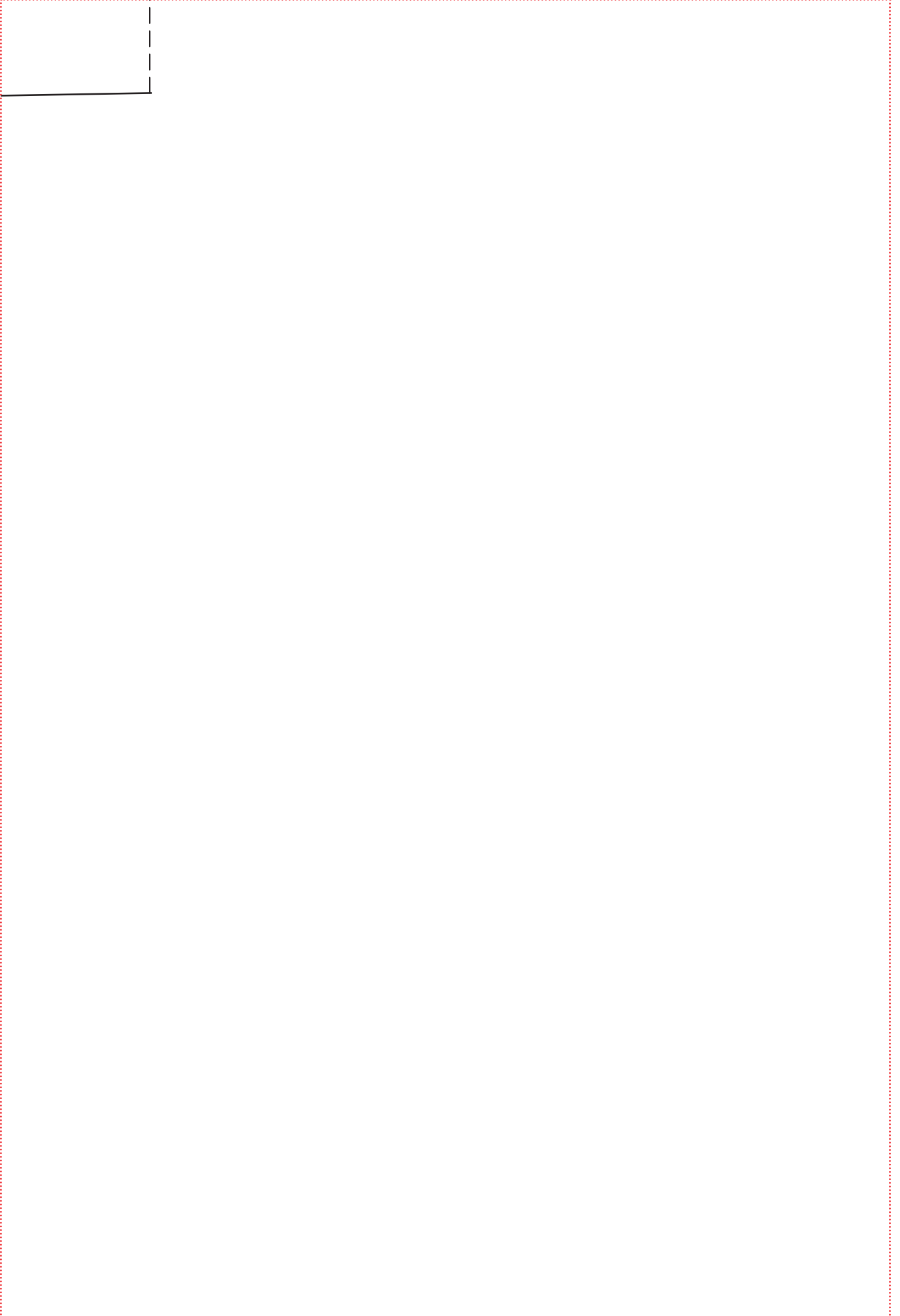


The image shows a large rectangular area defined by a red dotted border. Inside this area, there is a vertical dashed line running from the top to the bottom. On the left side of this vertical line, there are three horizontal dashed lines that intersect it, creating four rectangular cells. The top cell is the largest, and the three cells below it are smaller and of equal height. The rest of the area to the right of the vertical dashed line is empty.

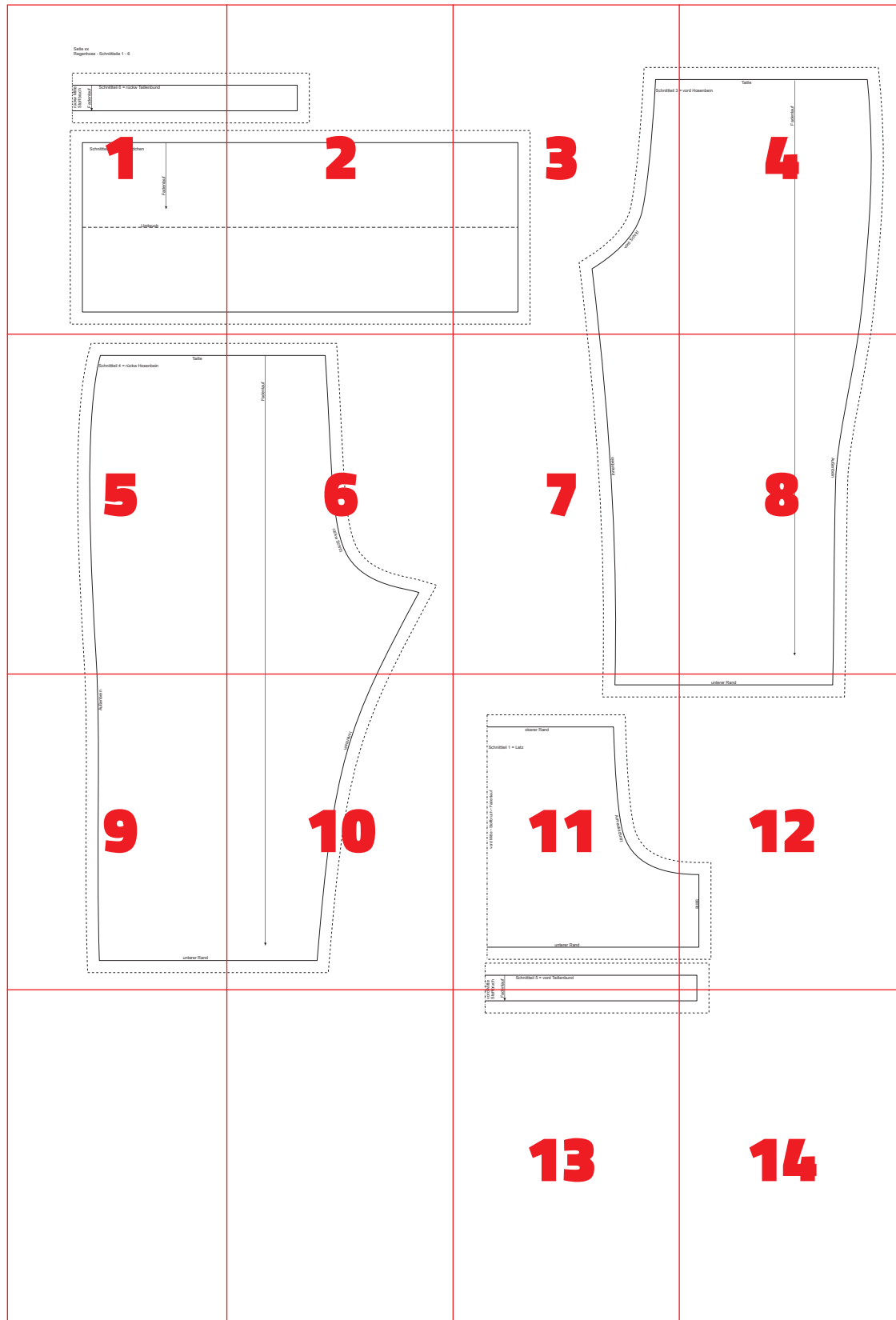




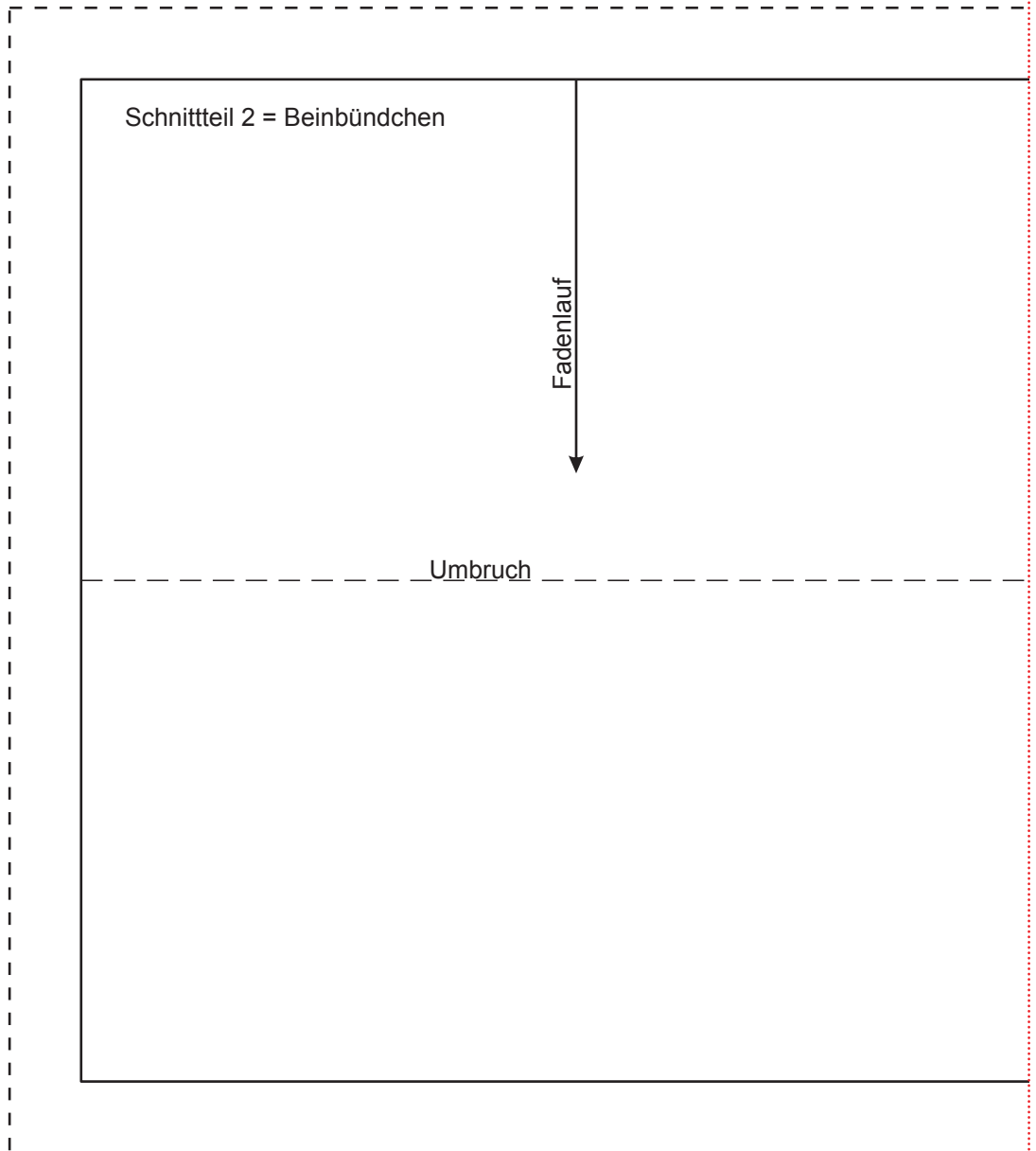
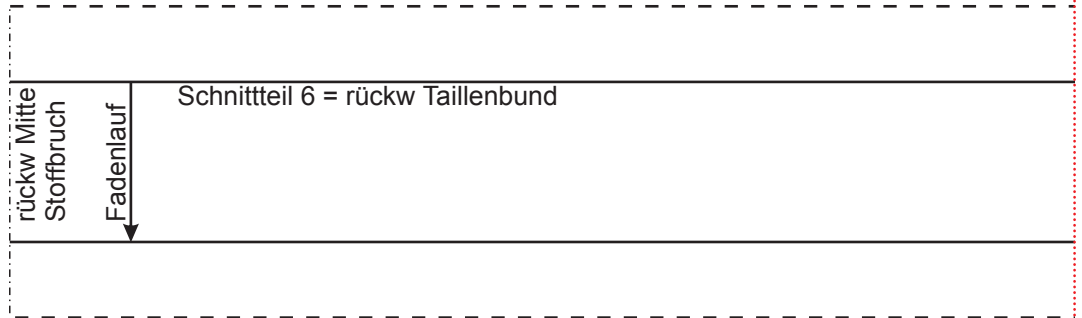


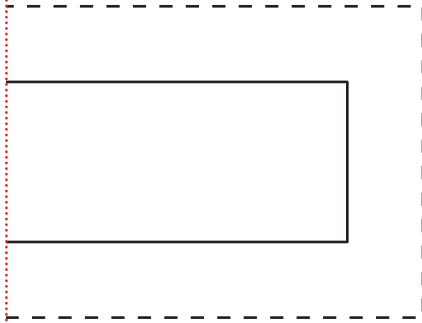


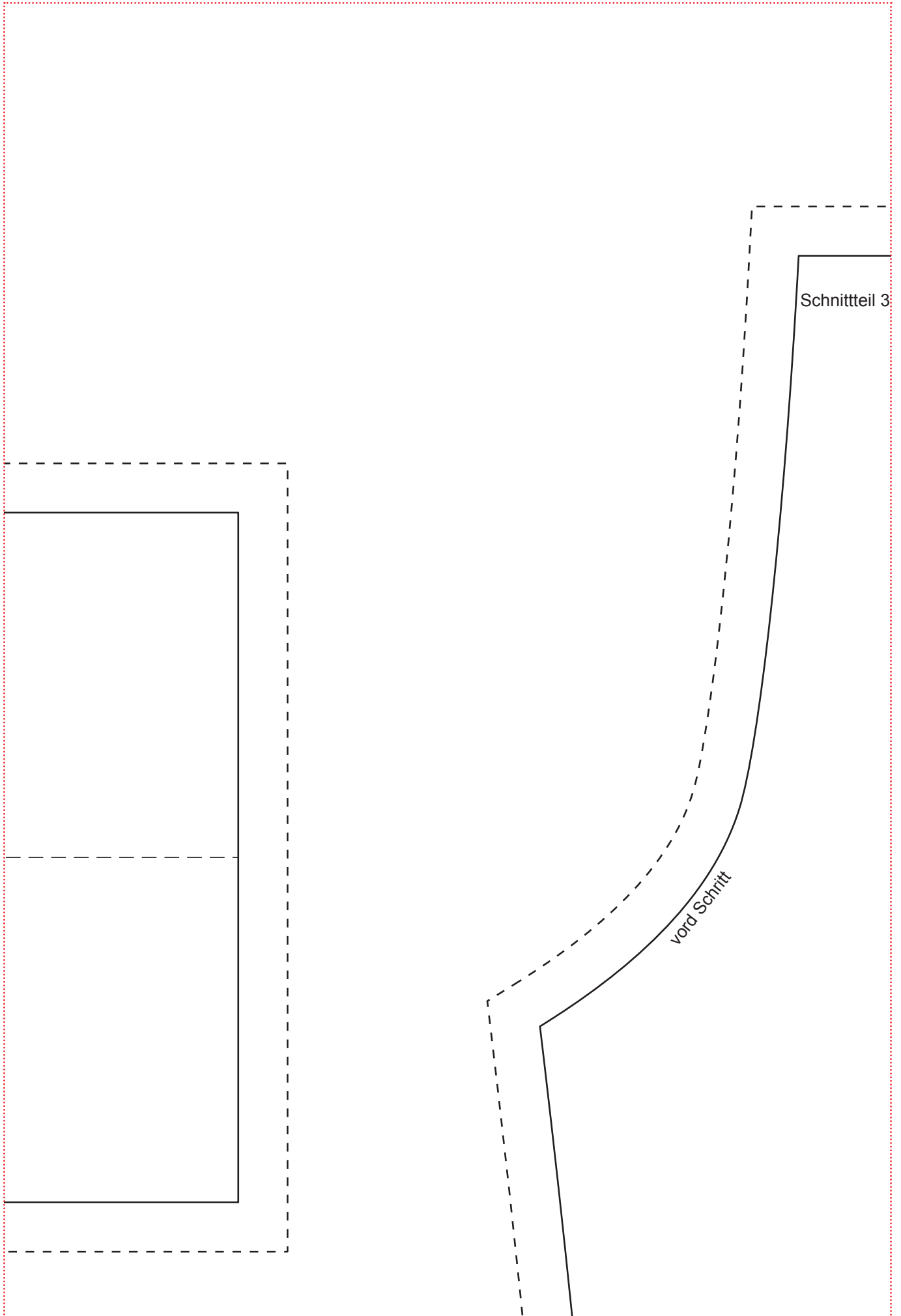
Zusammensetzen der Teile

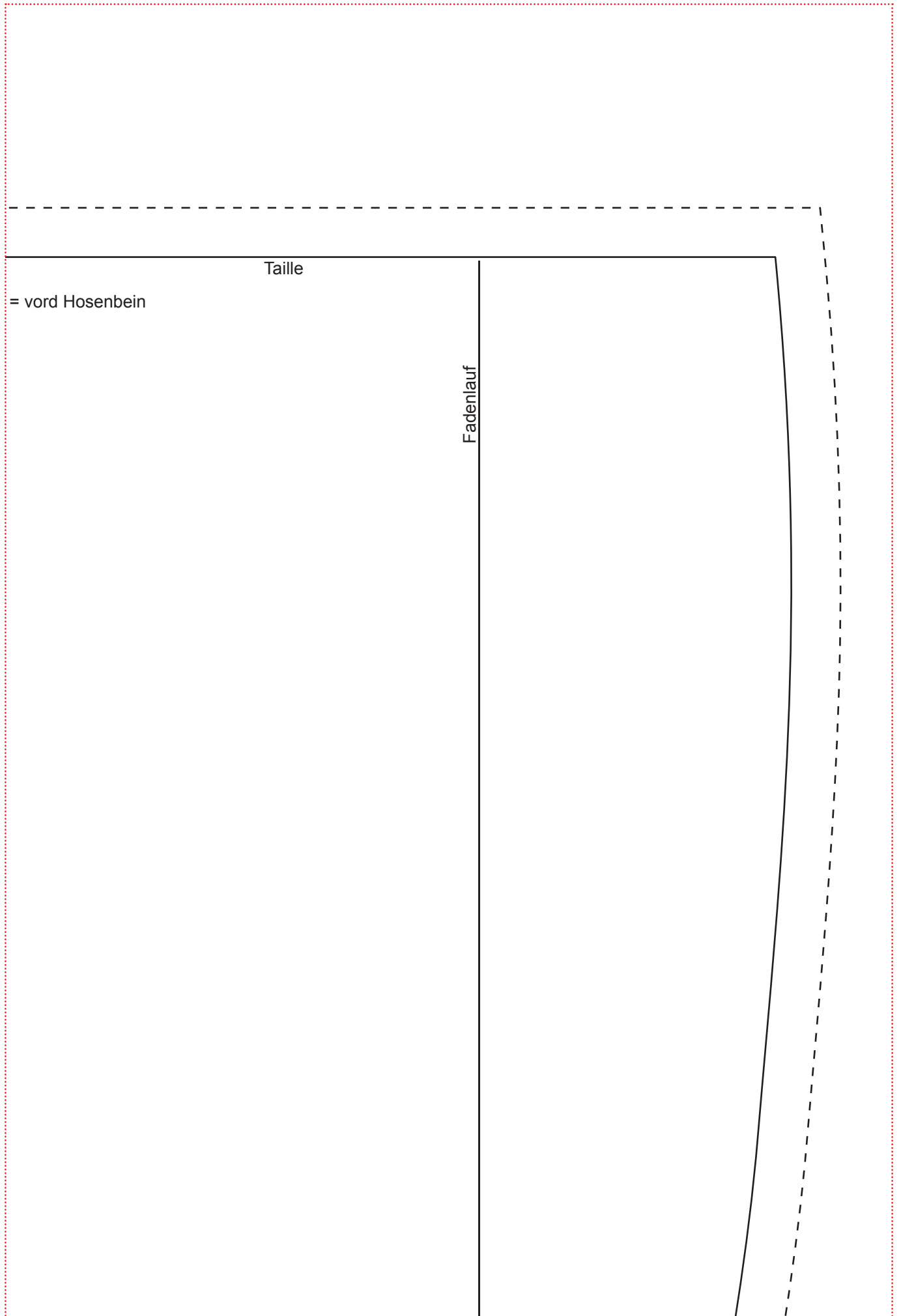


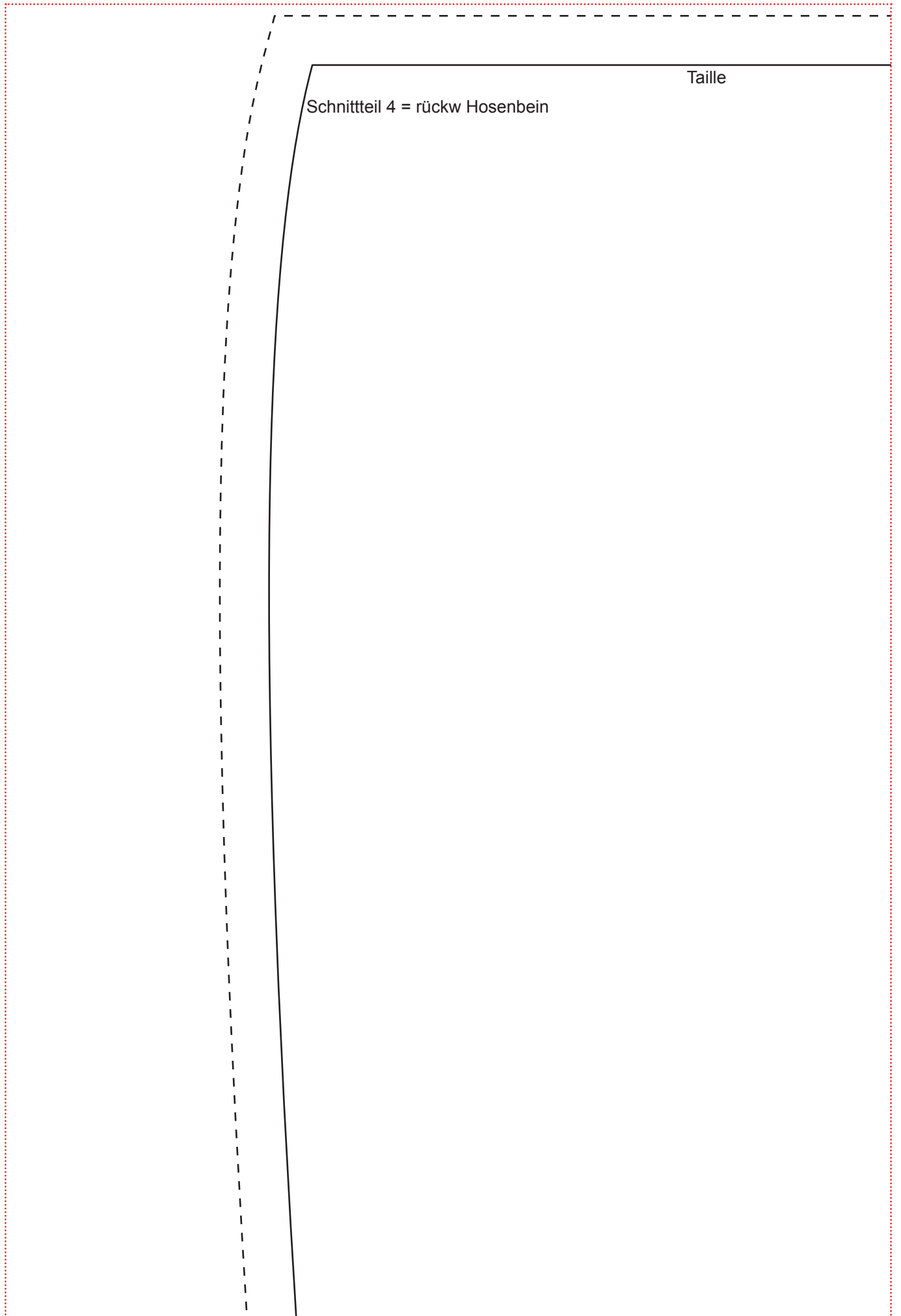
Regenhose - Schnittteile 1 - 6

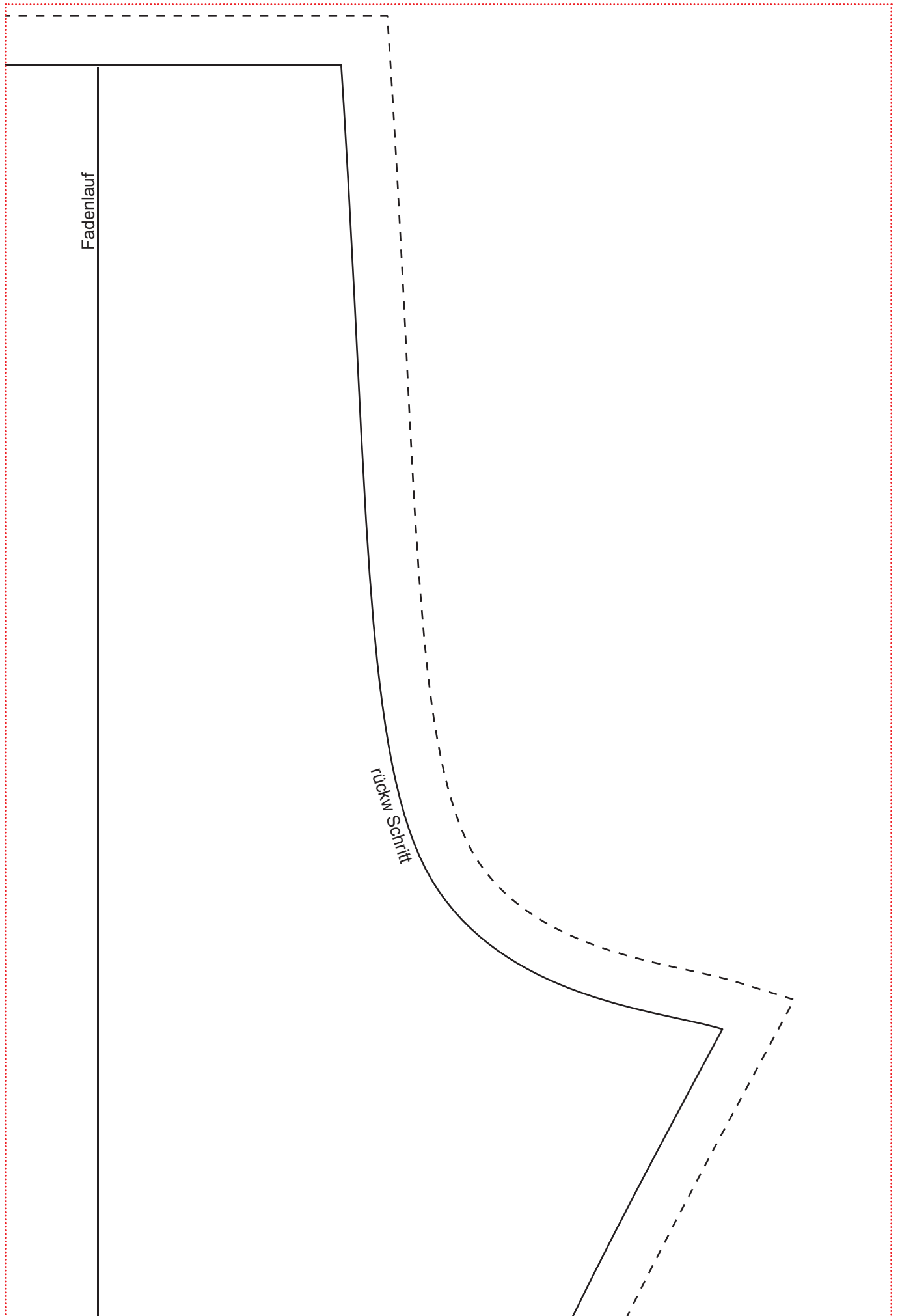








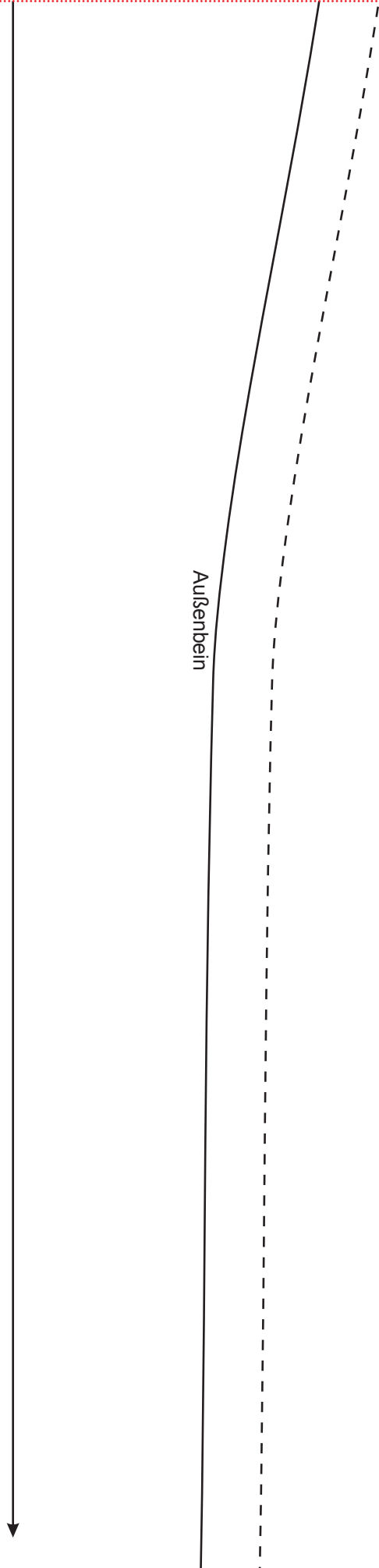






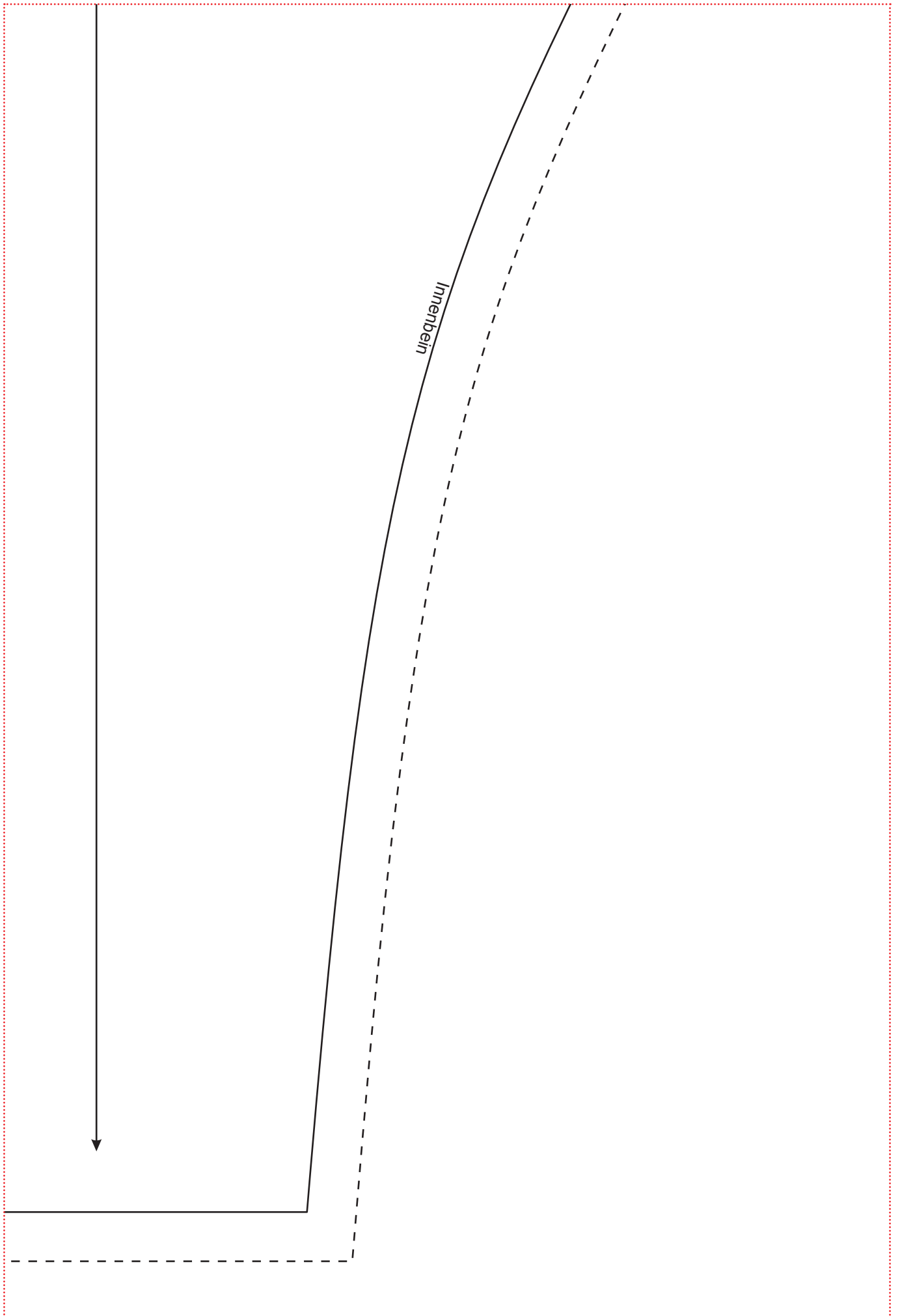
Innerbein

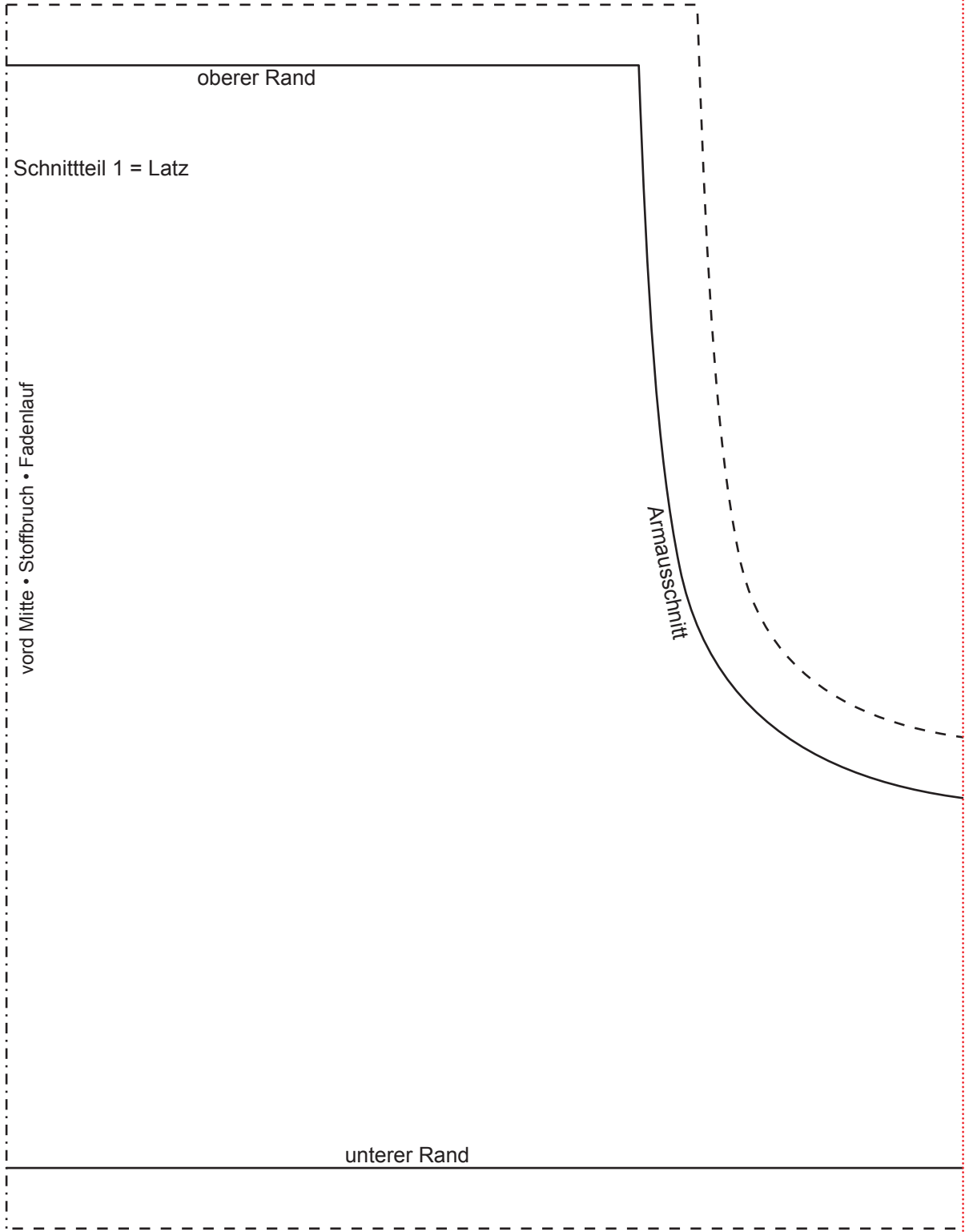
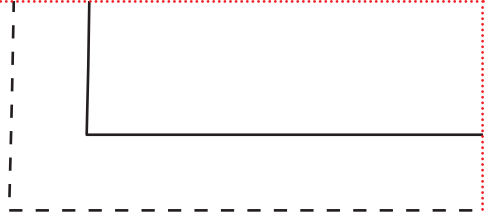
Außenbein



Außenbein

unterer Rand





mitte
Stoffbruch
Fadenlauf

Schnittteil 5 = vord Taillebund

unterer Rand

Seite

vord
Stoffb

Fader



